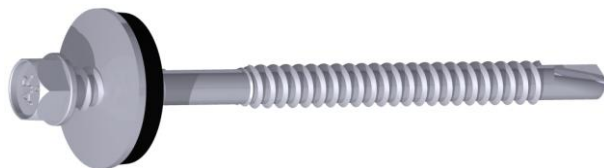


AR6 W 5,5/6,3 x L

SANDWICH PANELS SCREWS

Info-GLOBAL[®]
Fastening



PRODUCT CHARACTERISTICS

Self-tapping drilling screws with double thread, made of hardened carbon steel, with hexagon head and with mounted steel or aluminium washer with EPDM attached

HEXAGONAL HEAD SIZE	8 mm
MATERIAL OF SUPPORTING STRUCTURE	steel
MIN. THICKNESS OF SUPPORTING STRUCTURE (T min)	1,5 mm
DRILLING CAPACITY (DC)	6,0 mm
POSSIBILITY OF PAINTING	YES
PAINT COATING THICKNESS	approx. 50 µm
RECOMMENDED SCREWDRIVER SPEED	1500 rev/min
RECOMMENDED TIGHTENING TORQUE	5 Nm

SCREW SIZE AND OTHER UTILITY DATA

AVAILABLE SIZES dxL [mm]	MTmin [mm]	MTmax [mm]	MATERIAL	TYPE OF ANTICORROSION COATING	USED WASHERS
5.5/6.3x65	27	47	carbon steel	*CS *CSG *CSE	16ZN, 19ZN, 19AL
5.5/6.3x90	32	72			
5.5/6.3x110	45	92			
5.5/6.3x125	60	107			
5.5/6.3x150	65	132			
5.5/6.3x175	90	157			
5.5/6.3x200	115	182			
5.5/6.3x230	145	212			
5.5/6.3x275	190	257			
5.5/6.3x320	235	302			

CS - carbon steel coated with zinc coating with a minimum thickness of 12 microns (optionally 24 microns)

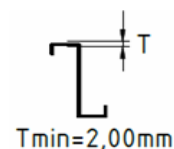
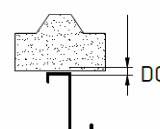
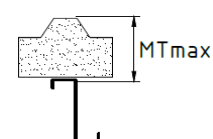
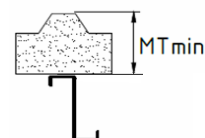
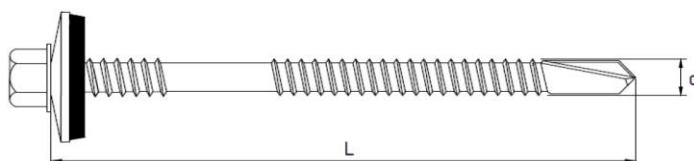
CSG - carbon steel coated with zinc coating with a minimum thickness of 5 microns with additional Eco-GrePert ceramic coating **(CORROSION RESISTANCE UP TO C4 CATEGORY)**

CSE - carbon steel with EsC coating **(CORROSION RESISTANCE UP TO C4 CATEGORY)**

ZN - galvanized carbon steel, AL - aluminium

MTmin - minimum thickness of the fixed elements

MTmax - maximum thickness of the fixed elements including thickness of supporting structure



SELECTED CHARACTERISTIC RESISTANCES PER SHEAR *

a) with 16ZN washer

Characteristic resistance [kN]				
Thickness of facing of SP [mm]	Thickness of supporting structure [mm]			
	2,00	3,00	4,00	≥5,00
0,40	0,70	0,70	0,70	0,70
0,50	1,31	1,31	1,31	1,31
0,63	1,57	1,57	1,57	1,57
0,75	1,83	1,83	1,83	1,83
1,00	1,83	1,83	1,83	1,83

b) with 19AL washer

Characteristic resistance [kN]				
Thickness of facing of SP [mm]	Thickness of supporting structure [mm]			
	2,00	3,00	4,00	≥5,00
0,40	0,70	0,70	0,70	0,70
0,50	1,31	1,31	1,31	1,31
0,63	1,57	1,57	1,57	1,57
0,75	1,83	1,83	1,83	1,83
1,00	1,83	1,83	1,83	1,83

SELECTED CHARACTERISTIC RESISTANCES PER PULL-OUT *

a) with 16ZN washer

Characteristic resistance [kN]				
Thickness of facing of SP [mm]	Thickness of supporting structure [mm]			
	2,00	3,00	4,00	≥5,00
0,40	2,00	2,00	2,00	2,00
0,50	2,48	2,48	2,81	2,81
0,63	2,48	2,48	3,53	3,53
0,75	2,48	2,48	4,34	4,34
1,00	2,48	2,48	4,34	4,34

b) with 19AL washer

Characteristic resistance [kN]				
Thickness of facing of SP [mm]	Thickness of supporting structure [mm]			
	2,00	3,00	4,00	≥5,00
0,40	2,19	2,19	2,19	2,19
0,50	2,48	2,48	3,00	3,00
0,63	2,48	2,48	3,79	3,79
0,75	2,48	2,48	4,12	4,12
1,00	2,48	2,48	4,12	4,12

SELECTED MAXIMUM DISPLACEMENTS OF HEADS OF SCREWS *

a) with 16ZN washer

Max. displacement of head of screw, by displacement of outer facing [mm]				
Thickness of sandwich panel [mm]	Thickness of supporting structure [mm]			
	2,00	3,00	4,00	≥5,00
30,00	0,70	0,70	0,70	0,70
60,00	1,40	1,40	1,40	1,40
90,00	2,10	2,10	2,10	2,10
>140,00	3,20	3,20	3,20	3,20

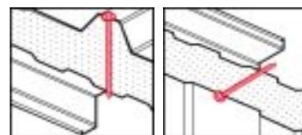
b) with 19AL washer

Max. displacement of head of screw, by displacement of outer facing [mm]				
Thickness of sandwich panel [mm]	Thickness of supporting structure [mm]			
	2,00	3,00	4,00	≥5,00
30,00	0,70	0,70	0,70	0,70
60,00	1,40	1,40	1,40	1,40
90,00	2,10	2,10	2,10	2,10
>140,00	3,20	3,20	3,20	3,20

** This product data sheet shows only examples of fastenings resistances/displacements. Full information about resistances/displacements for introduced screws are described in the **ETA-19/0586** technical approval*

PURPOSE AND SCOPE OF USE

Screws for fixing sandwich panels to cold-formed steel structures



This product data sheet is for information purposes only and does not constitute an offer within the meaning of Article 66 of the Civil Code par.1

Info-GLOBAL Sp.j., 63-400 Ostrów Wielkopolski,
67 Długa Street T +48 62 7372760 - F + 48 62 7372761
biuro@info-global.pl – <http://www.info-global.pl>

ETA-19/0586

CE 19